



Jump Start Early Childhood Consultation: Capacity Building through Partnerships



Ruby Natale, PhD, PsyD¹, Ellen Kolomeyer, PhD¹, Ana Robleto, MPH, MEd¹, Maite Schenker, PhD¹, Rachel Spector, MSW²

¹University of Miami Miller School of Medicine/Mailman Center for Child Development

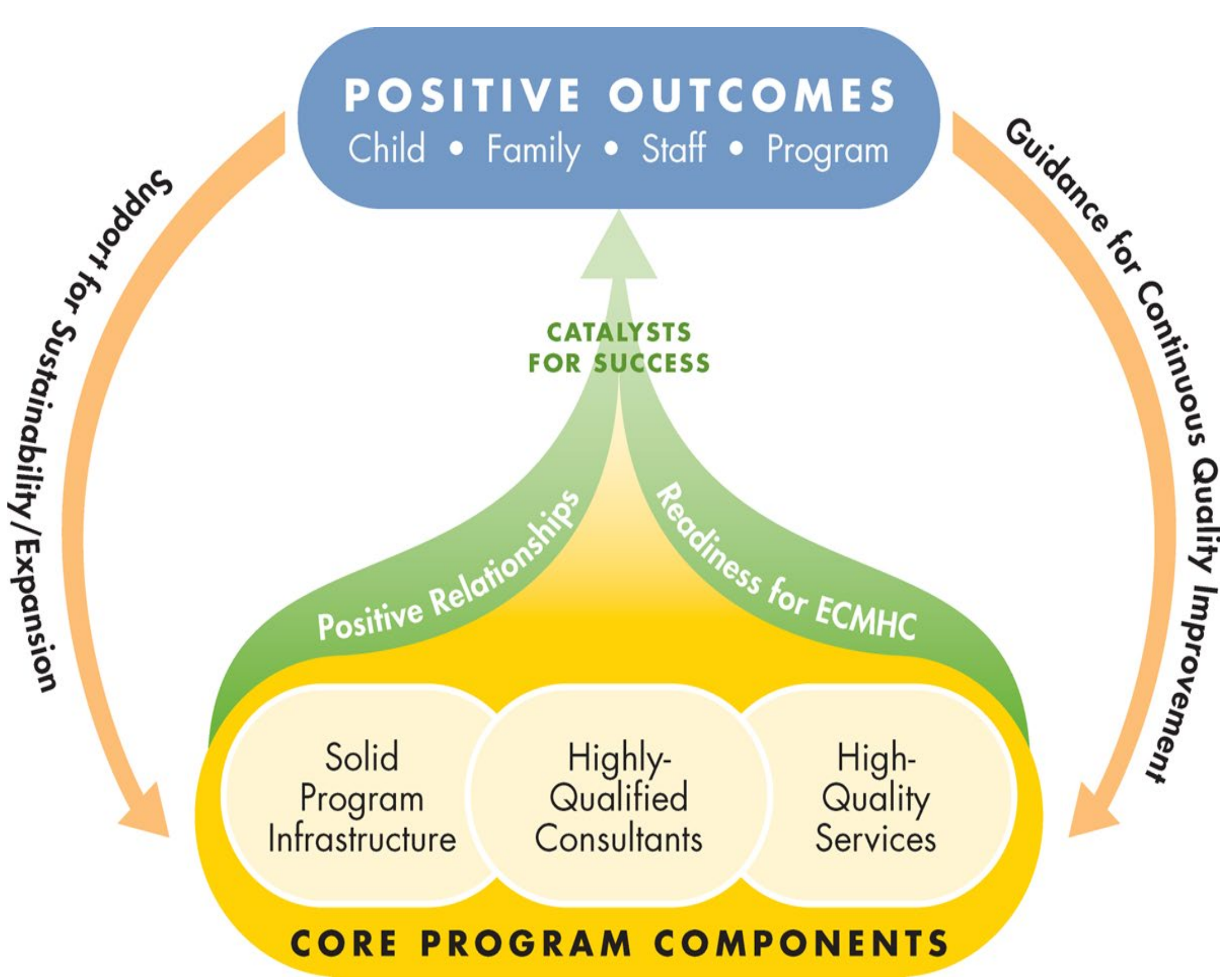
²The Children's Trust of Miami-Dade County

Abstract

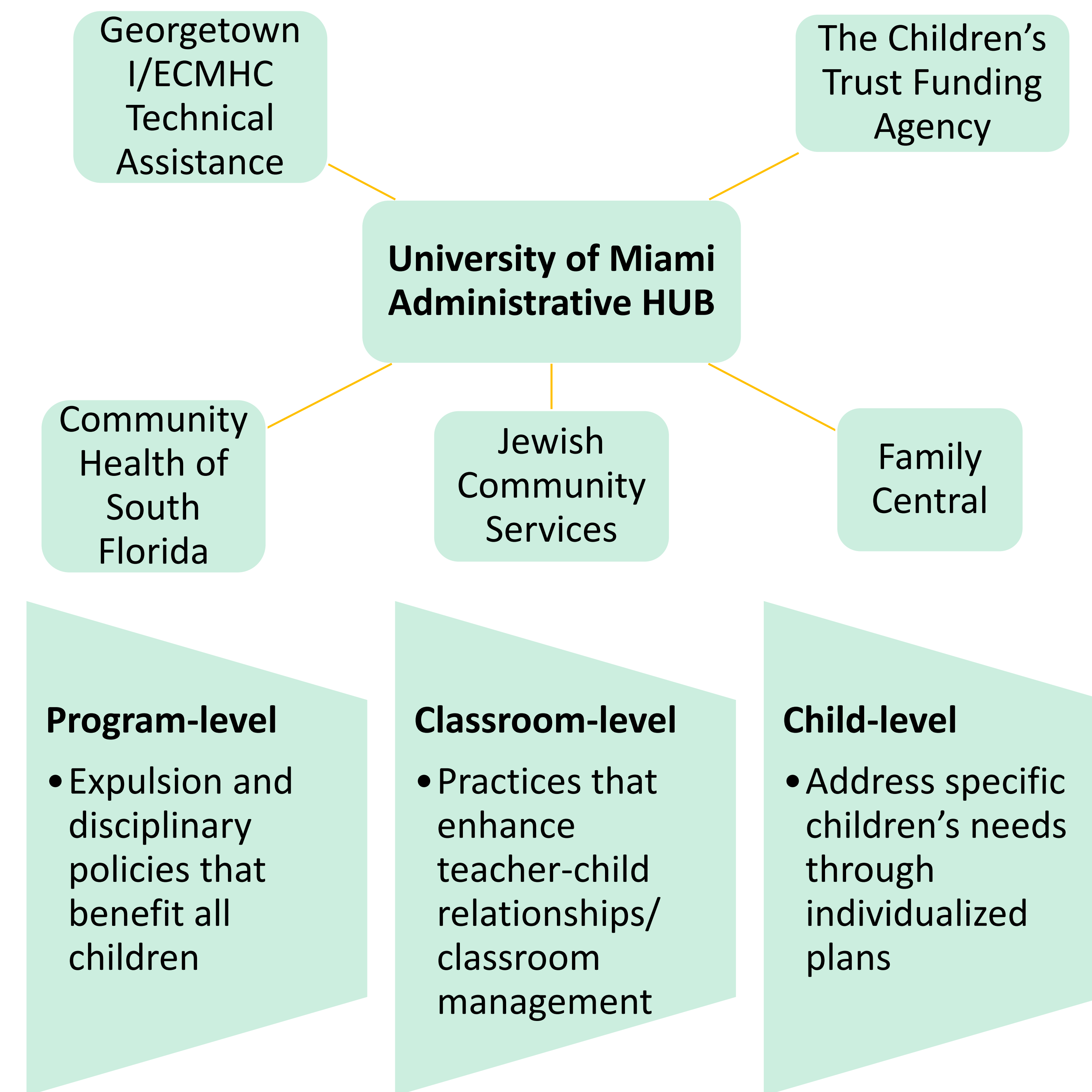
Given that young children with disabilities, including emotional and behavioral difficulties, are at significantly greater risk for expulsion, the Jump Start Early Childhood Consultation (JSECC) program aims to build the capacity of directors and teachers in early learning centers to effectively address all children's needs in order to minimize expulsions, including soft expulsions. Based on the Infant/Early Childhood Mental Health Consultation model (I/ECMHC), JSECC incorporates the tenets of solid program infrastructure, highly-qualified mental health consultants, and high-quality services. By providing program-focused, classroom-focused, and child-focused consultations, JSECC aims to capacitate early learning providers to reduce expulsion and build inclusive classrooms.

Rationale

Mental health consultation is based on the theory that change in childcare and early education practices related to supporting social/emotional development rests on the foundation of strong and trusting relationships between the mental health consultant and the adults who educate and care for young children. Additionally, mental health consultation serves as a continuous learning framework to support ongoing improvement of service quality.

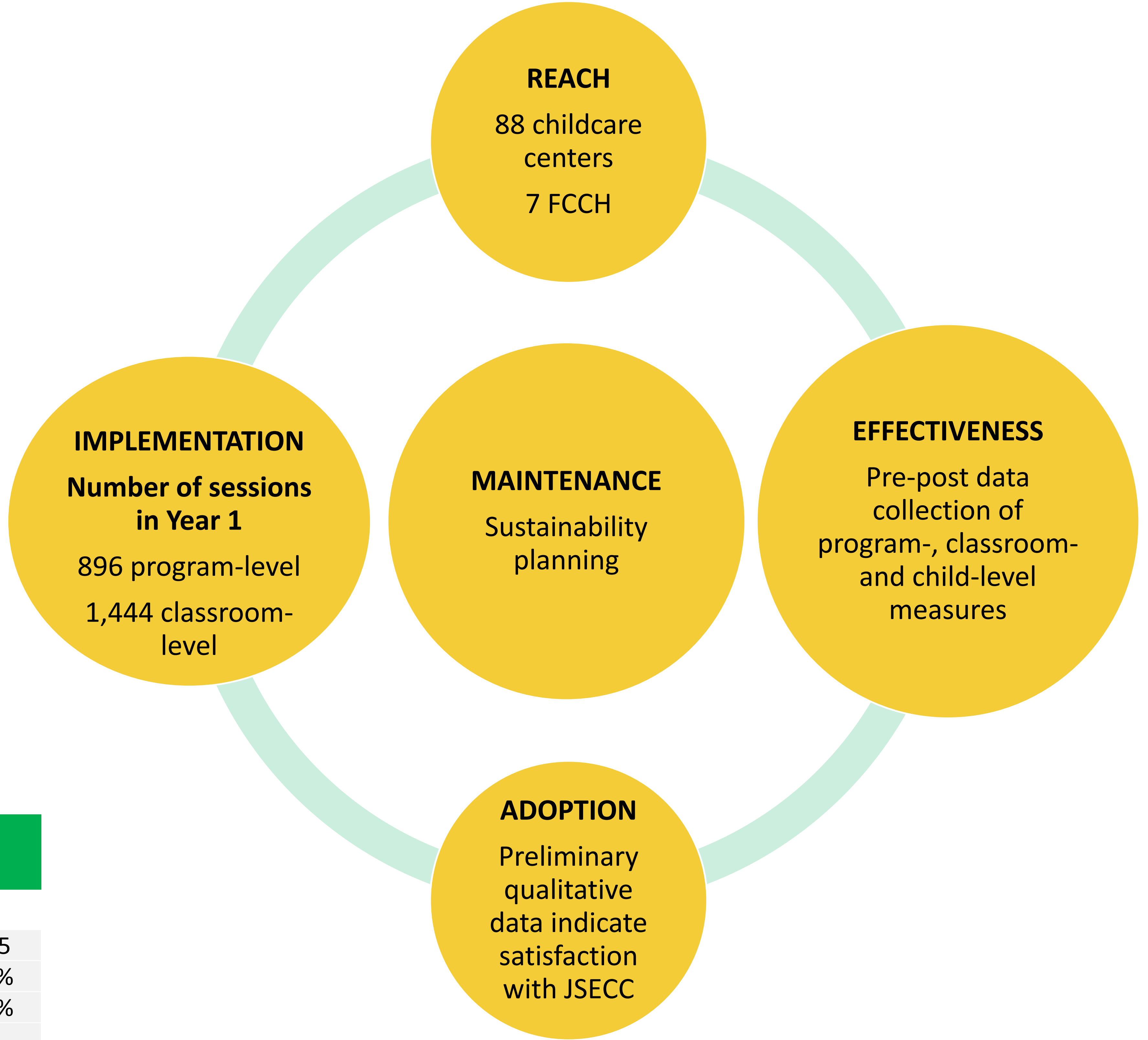


Program Structure

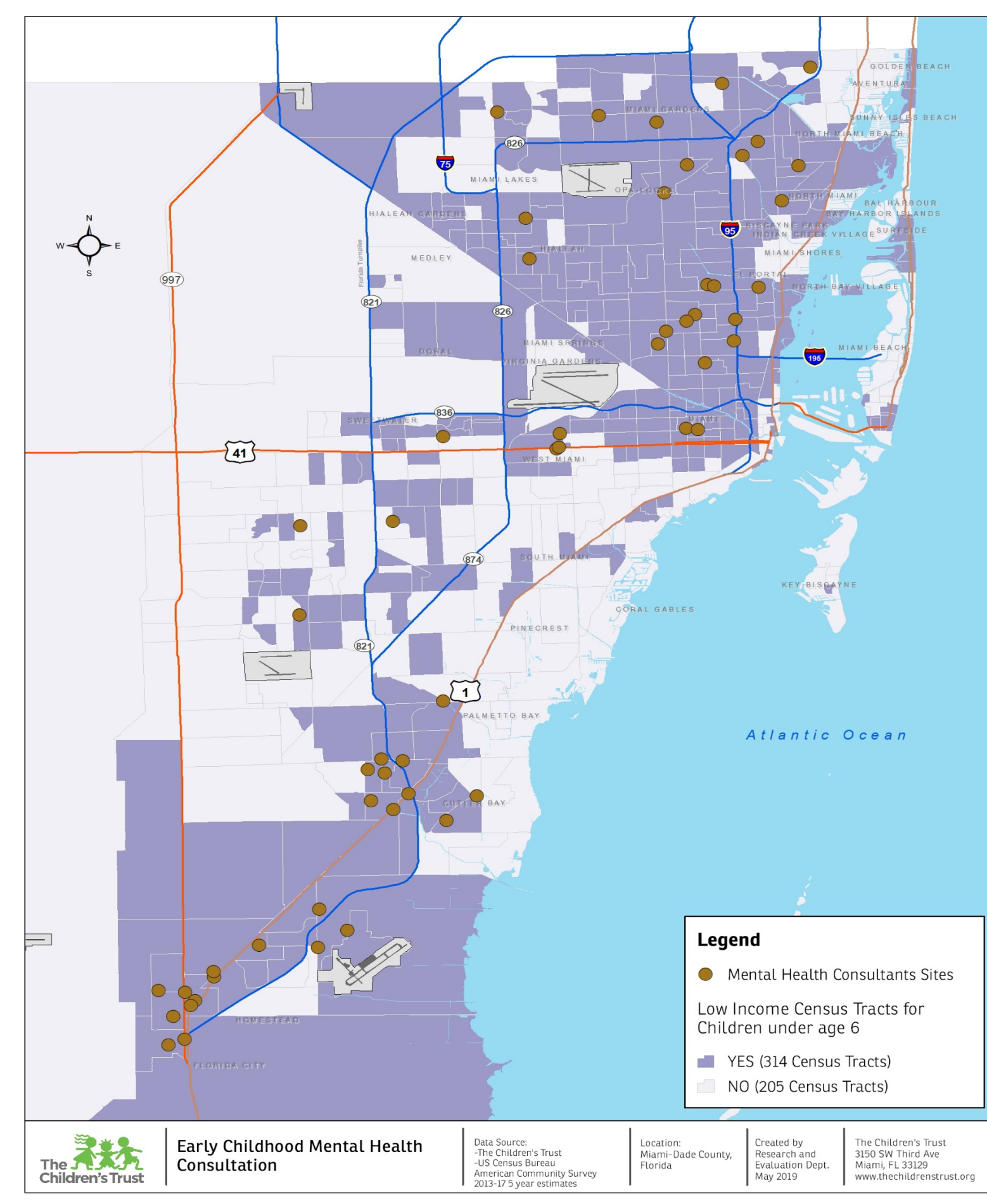


RE-AIM Model

We conduct ongoing program evaluation using the Reach, Effectiveness, Adoption, Implementation, and Maintenance (RE-AIM) model. Evaluation components are presented below.



Sample



Directors (n)		Teachers (n)	
Hispanic	72%	Hispanic	79%
Black, non-Hispanic	18%	Black, non-Hispanic	16%
Highest ed. level		Highest ed. level	
Some HS	1%	Some HS	3%
HS/GED	2%	HS/GED	28%
Technical Training	2%	Technical Training	10%
Some college/AA	34%	Some college/AA	30%
Bachelor's degree	40%	College degree	25%
Graduate degree	21%	Graduate degree	4%

Children in programs served (n)	Total
Hispanic	6,157
Black, non-Hispanic	55%
Haitian	21%
Spanish-speaking	4%
Creole-speaking	43%
	1%

Leading the Change Together

The JSECC program aims to shift Miami-Dade County toward inclusive policies for all young children and particularly for those at highest risk for expulsion and the related negative outcomes seen later in life. Through advocacy, we believe that we can shift the culture in our community and beyond to build capacity and implement policies that ensure sustainability of inclusive practices.



Made possible with funding from The Children's Trust

